

Vinva Global Systematic Equities

About the Fund

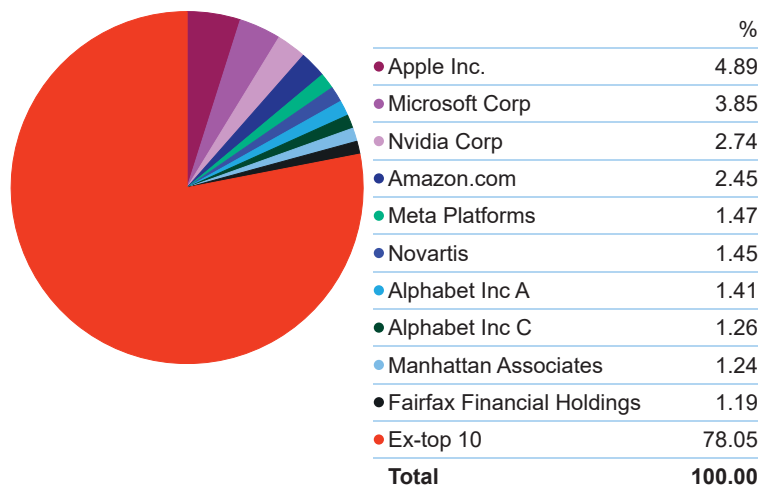
Centric is the Vinva Global Systematic Equities Fund ("Fund") responsible entity, manager and the issuer of the units of the Fund. The Fund's underlying strategy is managed by Vinva Investment Management Limited ("Vinva"), with a mandate to construct and manage a diversified portfolio of international equities. Vinva is an investment management firm established in 2010 and is based in Sydney. Vinva specialises in managing share investment strategies across Australia and the globe on behalf of large institutional clients.

The Fund aims to provide investors with a total investment return (after fees) that outperforms the MSCI World-ex Australia ex-Tobacco ex-Controversial Weapons (unhedged with net dividends reinvested in Australian dollars) ("Benchmark") over periods of seven years or longer. The Fund has a systematic (quantitative) equity investment strategy which harvests returns from international equity markets using a disciplined and repeatable process, from how the strategy evaluates which stocks to invest in to how to weight them in the portfolio. The strategy is tightly risk managed and will take small active over/underweights across a large number of stocks, typically 400-600.

Fund Facts

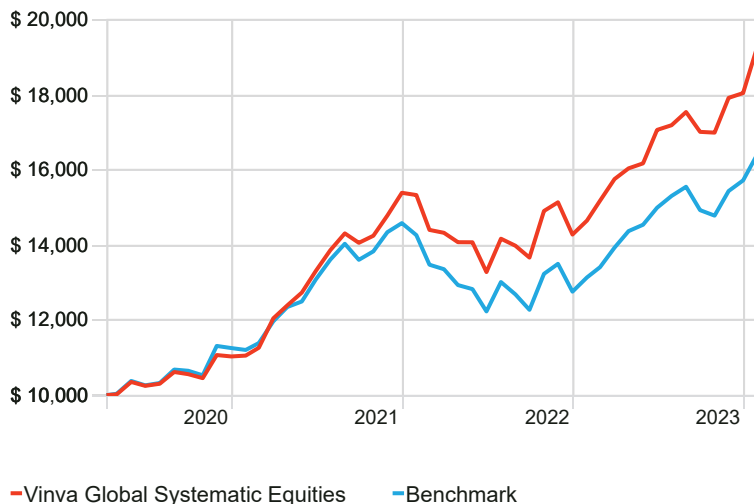
| | |
|----------------------------------------|----------------------|
| APIR Code | BEG1488AU |
| Asset Class | International Equity |
| Inception Date | 9/04/2020 |
| Fund Size | \$ 255,291,031 |
| Minimum Initial Investment | \$ 5,000 |
| Distribution Frequency | Annually |
| Minimum Suggested Investment Timeframe | 7 Years |
| Month End Unit Price | 1.4940 |
| Management Fees and Costs | 0.64% |
| Total Cost Ratio | 0.64% |

Portfolio Top 10 Holdings



Investment Growth of \$10,000 Since Inception¹

Time Period: Since Common Inception (9/04/2020) to 31/01/2024

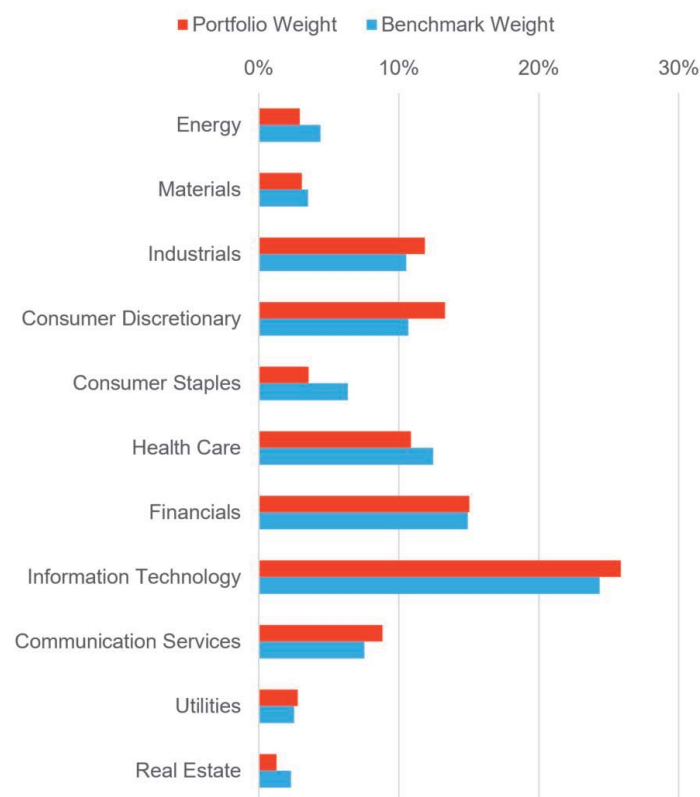


Net Performance Summary (%)¹

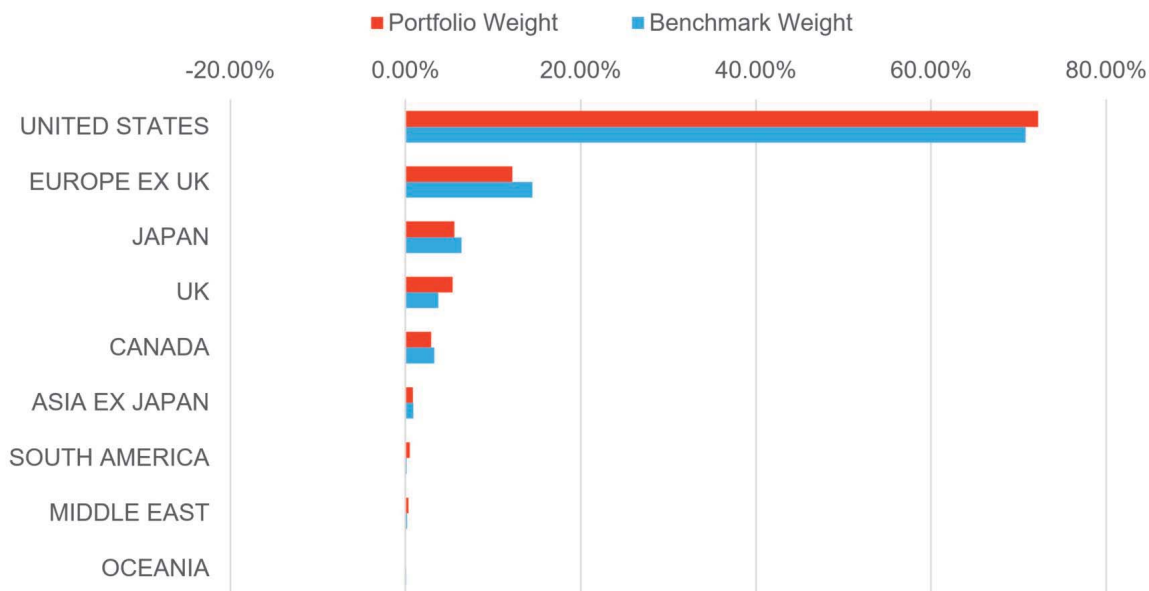
| | 1 Month | 3 Months | 1 Year | 3 Years | S.I. p.a |
|----------------------------------|---------|----------|--------|---------|----------|
| Vinva Global Systematic Equities | 7.00 | 13.63 | 31.81 | 20.44 | 19.12 |
| Benchmark | 4.52 | 11.16 | 25.09 | 13.62 | 14.05 |

¹Past performance is not a reliable indicator of future performance.

Portfolio Sector Weights Compared to Benchmark



Portfolio Region Weights Compared to Benchmark



Notes

1. Past performance is not a reliable indicator of future performance. All returns are in AUD unless otherwise specified.
2. Performance is net of all Centric and underlying investment manager fees but gross of any financial advice and/or platform fees. All returns greater than 12 months have been annualised.
3. Since Inception (S.I.) fund returns are from first full month available May 2020.
4. It is important to note that the value of assets in the Fund and the level of returns will vary and no return is guaranteed.
5. Total Cost Ratio is inclusive of Management Fees and Costs, Performance Fees and Transaction Costs. Refer to the Product Disclosure Statement (PDS) for further information.
6. It is anticipated that income distributions will be paid annually. Please refer to the PDS for more information.
7. Prior to September 2023, the Fund's benchmark was the MSCI World-ex Australia(unhedged with net dividends reinvested in Australian dollars).

Disclaimer:

Issued by Specialised Private Capital Ltd (ABN 87 095 773 390, AFSL No. 246744) trading as Centric Capital (Centric) as Responsible Entity of the Global Systematic Equities Fund (ARSN 635 318 991) ("the Fund"). Please refer to the Product Disclosure Statement (PDS) for further information about the Fund.

Returns are in Australian Dollars (AUD), calculated on the basis of end of month redemption prices, assume all distributions are reinvested and are net of fees and costs (including GST and net of RITC for Australian taxable sales) unless stated otherwise. Returns do not take into account any taxes payable by an investor. The returns represent past performance only and are not a reliable indicator of future performance. The value of an investment may rise or fall with changes in the market. Centric does not guarantee the performance of the Fund.

The information contained herein is not personal advice and is of a general nature only. It does not take into account the investment objectives, financial situation or needs of any person. Before acting on any general advice, consider whether it is appropriate to you, in light of your objectives, financial situation and needs. A Target Market Determination (TMD) has been made in respect of the Fund. Investors should consider the PDS and the TMD relating to the Fund before making a decision in relation to the product. These are available at <https://www.specialisedprivatecapital.com.au/global-systematic-equities-fund> or by contacting Centric on 02 9250 6500. Centric recommends you speak with your financial and/or taxation adviser before making any investment decisions.

In preparing this document, reliance may have been placed, without independent verification, on the accuracy and completeness of information available from external sources. To the maximum extent permitted by law, neither Centric nor its directors, employees or agents accept any liability for any loss arising from the use of this document, its contents or otherwise arising in connection with it.